

APP 2024 WINTER CONFERENCE

AGENDA



ASSOCIATION OF
PACIFIC PORTS

JANUARY 24 TO 26, 2024
TURTLE BAY RESORT, OAHU, HAWAII



**PORT of
SAN DIEGO**
Waterfront of Opportunity

Proud Sponsor of the

2024 APP Winter Conference

portofsandiego.org



Proud sponsor of the Association of Pacific Ports Winter Conference



THE PASHA GROUP



The APP 2023/24 Executive Committee

OFFICERS

President

Shao-Liang Chen
Taiwan International Ports Corporation

First Vice President/Treasurer

Kim B. Puzey
Port of Umatilla

Second Vice President

Conchita Taitano
Port of Guam

Third Vice President

Steve Ribuffo
Port of Alaska

Past President

Bobby Olvera
Port of Long Beach

REGIONAL REPRESENTATIVES

Shu-Hui Cheng – Taiwan International Ports Corporation (Taiwan)

Sean Clark – Port of Columbia County (Oregon)

Lorianna Kastrop – Port of Redwood City (California)

Zoran Knezevic – Port Alberni Port Authority (B.C.)

Thomas Maddison – RMI Ports Authority (Marshall Islands)

Sara Young / Kevin Ware – Port of Skagit (Washington State)

AT LARGE

Falenaoti Loi-On Fruean – American Samoa Port Admin.

Kimberlyn King-Hinds – Commonwealth Ports Authority Northern Mariana Islands

Ian Marr – Port of Nanaimo

STRENGTH THROUGH SUSTAINABILITY

Our first priority is a clean, sustainable future for our community and the delicate surrounding habitat of the Sacramento-San Joaquin Delta. With major initiatives to help reduce emissions, enhance water quality, and other comprehensive wildlife protection programs, we continuously partner with our community to help keep our environment safe for a cleaner, greener future for all. *Together, we are the Port of Stockton.*



Port of Stockton
CALIFORNIA

Chair Michael Patrick Duffy, Vice-Chair William R. Trezza
Commissioners R. Jay Allen, David B. Atwater, Anthony Barkett,
Stephen Griffen, Allen Sawyer
Port Director Kirk DeJesus

(209) 946-0246

portofstockton.com/anchoring-unity

Welcome to the APP's 2024 Winter Conference

As President of the Association of Pacific Ports, it is my pleasure and honor to welcome you to the APP's 2024 Winter Conference in O'ahu, Hawaii.

As the middle point between our members in North America and those in South East Asia and the South Pacific, Hawaii not only serves as a convenient meeting location for all members but its natural beauty and tropical climate provide the ideal setting to carry out the main goals of the APP — learning from each other, sharing your knowledge, and enjoying the company of your peers. I encourage you to make the most of your time here.

The agenda for this year's conference strives to balance our time between in-class sessions and networking opportunities. For example, attendees will hear presentations on topics such as infrastructure planning and development, transitioning to zero emissions and best practices in achieving sustainable operations, port governance, and coastal resiliency to name just a few.

As always, one of our most important agenda items is the Port Update Session with each Port being given the opportunity to not just describe activities but to raise issues that others might be experiencing. Noting that we have now moved this session to one of the first on our agenda, you'll have many chances to discuss these issues over the following days of the conference.

You will also find a number of opportunities to network and enjoy the tropical surrounding of this year's venue — golf at the

Turtle Bay Resort, a Hawaiin style dinner complete with hula and fire knife dancers, and a trip to the Dole Plantation to learn about cargo logistics and supply chain management, for example.

I would like to take this opportunity to thank our many sponsors. While there are too many to name here, you'll find their logos just below and we'll be reminding you of their participation throughout the

Conference. Such support is critical to the APP's success and it is with sincere gratitude that you have our thanks.

My last message includes my personal invitation to you. As we wrap up our 2024 Winter Conference, planning on the APP 110th Annual Conference will begin in earnest. With Taiwan International Ports Corporation as the Host Port, my team and I are eager and excited to welcome you to Kaohsiung, Taiwan — August 11 to 14, 2024. We look forward to sharing details over the coming months.



Shao-Liang Chen

Shao-Liang Chen

President, APP / President, Taiwan International Ports Corporation

Thanks to all of our sponsors!



Port of Stockton
CALIFORNIA



PORT OF UMATILLA



COMPANION PROGRAM

JANUARY 24, 2024

6:00 to 8:00 pm

Welcome Reception (Bay View Beach Lawn)

Sponsored by The Pasha Group

Your first opportunity to greet old friends and colleagues and get started on building new relationships!

JANUARY 25, 2024

6:30 to 8:30 am

Breakfast (Kuilima 3)

Sponsored by Port of Stockton

10:00 to 11:00 am

Yoga on the Beach (Bay View Beach Lawn)

A one-hour Kundalini yoga session with certified instructor James Eischen. Kundalini yoga emphasizes breathing, meditation, mantra and exercises with variable levels of physical challenge.

Companions are asked to make their way to the Bay View Beach Lawn in time for a 10:00 am start. While a yoga mat will be provided for you, please bring your own towel.

Noon to 1:00 pm

Lunch (Kuilima 3)

Sponsored by Port of San Diego

1:00 to 3:00 pm

Shaka Kūkākūkā Bird Watching Safari

A guided safari tour of Turtle Bay Resort's 7 miles of wilderness trails which are home to 5 endemic and endangered birds in our green electric open air safari shuttle. Your guide will stop at 9 ahu markers to kūkākūkā (talk story) about the endangered animals, birds, WWII history and Hawaiian culture specific to Turtle Bay. Between the stops you will travel through the ocean forest, along the shoreline and through the Punaho'olapa wetlands to look for over 70 species of birds with provided binoculars and bird ID card. The tour will finish up in Kawela Bay visiting the "Lost" banyan tree, the mysterious magic bus and finally stop at Turtle Bay Resort's Kuilima farmlands to sample either a local fresh or fried apple banana (when available).

Companions who have registered should meet in the main lobby/front entrance of the Turtle Bay Resort by 12:45 pm.

Need Assistance?
We're here to help! Call:
Jane McIvor — 604-418-8546
Philippe Critot — 323-660-5459



6:00 to 9:00 pm

Dinner on Bay View Beach

Sponsored by Port of Long Beach and Young Brothers with support from Port of Umatilla, Liebherr, and American Samoa Department of Port Administration

Like its name suggests, Bay View Beach provides a stunning backdrop for the APP's Winter Conference Dinner. Wonderful food, good friends and great entertainment will make for a memorable night!

JANUARY 26, 2024

7:00 to 9:00 am

Breakfast (Kuilima 3)

Sponsored by Port of Nanaimo with support from GHD and FCS Group

9:00 to Noon

Field trip: Dole Plantation

Join conference attendees on this field trip to the Dole Plantation for a tour of the pineapple field and the packaging plant. Representatives from Dole will be on hand to provide commentary on operations, including cargo logistics and supply chain aspects.

Noon to 12:45 pm

Lunch (Kuilima 3)

Sponsored by Port of Alaska, Fiji Ports Corporation, Liftech, and BBK Law

2:00 to 4:00 pm

Grand Tour of Kahuku Farms

Learn the story of family-owned Kahuku Farms! Take a tractor-pulled wagon ride through the fields to discover what it takes for farmers to put fresh food on our local supermarket shelves. Tour experience includes tasting of seasonal farm fruits and a special stop in our cacao orchard where guests will taste fresh cacao (seasonal) and farm grown chocolate.

Companions are asked to meet in the main lobby/front entrance of the Turtle Bay Resort by 1:50 pm.



A Year of Rail

The Port of Long Beach is pleased to sponsor the Association of Pacific Ports Winter Conference.

For us, 2024 will be a year of rail – we're investing \$1.5 billion in rail infrastructure – more tracks, longer trains and greener locomotives. More cargo moving faster to market more efficiently as we work to become the world's first zero-emissions port.



Port of
LONG BEACH
THE PORT OF CHOICE

7:15 am

Golf: Turtle Bay Golf Course

Co-sponsored by Matson with support from SSA Marine

Designed by Arnold Palmer and Ed Seay, this course was rated one of Golf Magazine's "Top 10 New Courses" in America and ranked 4th among Golf Digest's "Best New Resort Courses in America" when it opened in 1992. Today, the Palmer Course is consecutively ranked the #1 Public Access Golf Course on O'ahu. It features two very distinct experiences.

The front nine will challenge golfers with a Scottish Links style layout, while the back nine has a more tropical setting as it winds through verdant landscapes. The course forms a horseshoe around the Punaho'olapa marsh, an unspoiled 100-acre wetland and bird sanctuary. Water comes into play on 14 of the Palmer holes. The signature 17th hole offers panoramic ocean views from the green while the hole is dotted with nine bunkers, which makes it as challenging as it is scenic.

This par 72 course measures 6,225 yards from the resort tees. When played from the Palmer (black) tees, this 7,218-yard seaside course presents a stiff challenge to even the best players. Sand traps are plentiful, with more than 70 menacing the fairways and protecting the greens. However, there are five sets of tees on each hole that provide an enjoyable experience for golfers of any ability.

1:00 to 3:00 pm

APP Executive Committee Meeting (Maui Room)

Association business for the APP Executive Committee.

1:00 to 4:00 pm

Registration (Located in the Kuilima Foyer)

6:00 to 8:00 pm

Welcome Reception (Bay View Beach Lawn)

Sponsored by The Pasha Group

Your first opportunity to greet old friends and colleagues and get started on building new relationships! Welcome remarks from DreanaLee Kalili, Deputy Director, Hawaii Department of Transportation; Yin Min (Tiger) Huang, Business Development Director, Taiwan International Ports Corporation; and Sharon Weissman, Commissioner, Port of Long Beach.



**The Port
OF HUENEME**

*We
Make
Cargo
Move*

 Southern California

www.portofh.org

Foreign Trade Zone #205

 WORLD TRADE CENTER
OXNARD



PORT of PAGO PAGO

PORT OPERATIONS

- Container Dock: 1,112ftx55ft, D35ft
- Main Dock: 400ftx55ft, D35ft
- Inter-Island Dock: 90ftx40ft, D25ft
- Fuel Dock: 406ftx45ft, D40ft
- Service Wharf: 300ftx75ft, D25ft
- 4.5 acre Container Yard
- 40,000sqft Warehouse

AIRPORT OPERATIONS

- Pago Pago International Airport (PPG) – Tutuila Island
- Ofu Airport (Z08) – Manua Islands
- Fitiuta Airport (FAQ) – Manua Islands

"In the Global Market, American Samoa will become the hub of the Pacific Island region."

**We are here to
serve you!**

americansamoaport.as.gov



 **SSAPacific**
A Carris Enterprise

**We partner to move commerce with
efficiency, flexibility, and integrity.**

www.ssamarine.com

6:30 to 8:30 am
Breakfast (Kuilima 3)
Sponsored by Port of Stockton

7:30 am to 4:00 pm
Registration desk (Kuilima Foyer)

8:00 am
Welcome Remarks (Kuilima 1)

8:10 to 8:30 am
Keynote Speaker
DreanaLee Kalili, Deputy Director, Hawaii Department of Transportation

8:30 to 9:10 am
Disaster Relief and Recovery: Maui Fires
Moderator: DreanaLee Kalili, Deputy Director, Hawaii Department of Transportation
Panel: Greg Chu, General Manager, Container Operations, Matson; Chris Martin, Vice President, Operations, Young Brothers; Michael Ohashi, General Sales Manager, Pasha Hawaii, The Pasha Group
In August 2023, Hawaii's island of Maui experienced devastating fires that killed at least 100 people and left thousands homeless. Speakers from Matson, Young Brothers and The Pasha Group describe the maritime industry's efforts to provide disaster relief and ongoing recovery work.

9:10 to 10:00 am
Port Update Session
APP Port Members are asked to provide a three-to-four-minute update on activities within their jurisdiction. This important session will identify ideas and initiatives that can be further discussed throughout the remaining days of the conference.

10:00 to 10:20 am
Refreshment Break (Kuilima Foyer)
Sponsored by Burns & McDonnell, Port of Redwood City, and Lynker

10:20 to 11:00 am
Port Infrastructure Development Process
Moderator: Derek Chow, Pacific Rim Business Development Manager, Burns & McDonnell Engineering Company, Inc.
Panel: DreanaLee Kalili, Deputy Director, State of Hawaii, Department of Transportation; John Daley, PAMP Engineer Manager, Port of Alaska; and Rory Respicio, General Manager, Port Authority of Guam
The panel on the Port Infrastructure Development Process, moderated by Burns & McDonnell, will review the life-cycle development process with information on crucial activities

during various project stages. Panel members from the Port of Alaska and the Port Authority of Guam will share details of their port modernization activities that will meet their port's demands of today and create resiliency for the future.

11:00 to 11:40 am
The Transformation of Heavy Duty Equipment at Seaports in California: A Partnership Approach with Port Authority and Terminal Operators
Joe Carrillo, Regional Vice President, Northern California, SSA Pacific; Jeff Wingfield, Deputy Port Director of Regulatory and Public Affairs, Port of Stockton
As the title suggests, Port of Stockton and SSA Pacific will describe their strategy, efforts and successes in moving the Port toward electrification and zero emissions.

11:40 to Noon
Port of San Diego: Environmental Champion and Economic Powerhouse
Dan Malcolm, Board of Port Commissioners, and Randa Coniglio, Acting President and CEO, Port of San Diego
At the Port of San Diego, we believe we can be environmental champions and an economic engine. With the development of our Maritime Clean Air Strategy (MCAS) and investment of nearly \$65 million in electrification projects and technologies, we are well

INTERDISCIPLINARY ENVIRONMENTAL SERVICES

- // Planning & Assessment
- // Design
- // Permitting & Stakeholder Engagement
- // Operational Support
- // Sustainability & Reporting
- // Community Engagement

EA EA Engineering, Science, and Technology, Inc., PBC

OFFICES NATIONWIDE | eaest.com

SCAN ME

on our way to significant reductions in harmful air emissions along our bay and portside communities. By investing in and supporting innovation, we also position the Port to be more competitive and attractive to potential customers around the world that share the same values of environmental stewardship.

Noon to 1:00 pm
Luncheon (Kuilima 3)
Sponsored by Port of San Diego

1:00 to 1:45 pm
Port Infrastructure Modernization (Kuilima 1)
Erik Soderberg, PE, D.PE, SE, President,
Liftech Consultants Inc.

Liftech is an engineering firm with special expertise in container handling equipment and wharf structures. Our engineers have worked on thousands of cranes including new and upgrades since the beginning of containerization, having worked on the first dockside container crane. We have designed dozens of wharves, have evaluated hundreds, and have recently been involved in several major modernization projects involving significant upgrades to infrastructure and equipment. This presentation provides an overview of the operational changes that result in modernization projects, and the typical scope of

modernization projects including fendering systems, mooring systems, crane girder systems, electrical systems including power requirements, typical upgrades for equipment, shore power systems, and upgrades for yard equipment. We will provide key recommendations for a successful modernization project.

1:45 to 2:20 pm
Kapalama Container Terminal: A Roadmap to Clean Energy

Randy Grune, Managing Director, Hawaii Stevedores, Inc., a Pasha Group Company
Kapalama Container Terminal will serve as the State's most efficient operating terminal, providing a roadmap for transition of Hawaii's commercial port infrastructure to clean energy. Learn more about KCT's renewable energy-powered microgrid, electrified ship-to-shore cranes, and advanced technologies and equipment for optimized efficiency and gate flow that are the centerpiece of the Honolulu Harbor Modernization Program.

2:20 to 2:40 pm
Refreshment Break (Kuilima Foyer)
Sponsored by Port of Hueneme

2:40 to 3:20 pm
Reducing Risks While Expanding Ports

Alan K. Goldstein, Lawyer, Law Office of Alan K. Goldstein
U.S. ports today are pursuing infrastructure investment, development and expansion. Building a more modern, efficient and technologically advanced multimodal port is essential to being competitive on the world stage. And the Infrastructure Investment and Jobs Act provides billions of dollars to help get the job done. But expanding and reconfiguring port facilities is complex and involves risk. A lot of bad things can happen in the process: bodily injury, property damage, pollution, delays, defective workmanship, contract disputes, regulatory problems, insurance claims and lawsuits. How can we reduce these risks but still invest and expand? And how can we use the law to help minimize and manage liability exposures and costs inherent in port development? Alan K. Goldstein's presentation introduces this important topic. Recognized for decades as one of America's Best Lawyers, Alan brings a wealth of maritime experience and knowledge to help ports navigate the hazards of infrastructure investment, development and expansion.

3:20 to 4:00 pm
All Aboard! Navigating the Complex and Changing Future of Port Developments Together

Captain Jamie Marshall, National Sector Lead, Ports & Marine, Colliers Project Leaders
Everywhere we look, there is change going on. Organizations are trying to plan their way forward while dealing with changing economic conditions, climate impacts, industry consolidation and technological advancements. We will look at the current



state of Pacific Ports and take a look into the future to see how drivers such as sustainability, capacity utilization, new technologies and automation are improving Port Infrastructure. Join this session to explore and gain an understanding of the current ecosystem of the Ports and Marine Industry. Hear key learnings from relevant projects that are currently underway or in the planning and visionary stage. In the end, you will gain valuable knowledge about how and what opportunities are available to create the next generation of Ports — all while navigating a changing future.

4:00 to 4:40 pm

Nature-Based Solutions to Improve Coastal Resilience of Ports — Lessons Learned from the Department of Defense

Sam Whitin, Vice President and Coastal Resilience Director, EA Engineering, Science, and Technology Inc., PBC

From recent White House Executive Orders to substantial funding opportunities from the U.S. Department of Transportation, nature-based solutions to improve coastal resilience have received a lot of recent attention. But what are they exactly, how are they applied in the real world, and what results can they provide? The presenter will use recent examples to explore how the U.S. Navy and Marine Corps are designing and implementing nature-based solutions to improve coastal resilience and reduce lifecycle costs for their port facilities. The approach the Department of Defense has been taking and even some of the same funding streams are applicable to a wide variety of ports throughout the Pacific.

6:00 to 9:00 pm

Dinner on Bay View Beach

Sponsored by Port of Long Beach and Young Brothers With support from: Port of Umatilla, Liebherr, and American Samoa Department of Port Administration

Like its name suggests, Bay View Beach provides a stunning backdrop for the APP's Winter Conference Dinner. Wonderful food, good friends and great entertainment will make for a memorable night!



TOM E. SPEAR

OWNER/CEO

PHONE : 425-377-1550 | 206-605-5657

EMAIL : TOM@SCHRADERCO.COM

WEBSITE : WWW.SCHRADERCO.COM

ADDRESS : 927 OLYMPIC AVE EDMONDS, WA 98020



**Proud sponsor of
the Association of
Pacific Ports Winter
Conference 2024**

→ ghd.com



Lynker

CONNECTIONS :: SOLUTION-ORIENTED
PRODUCT OUTPUT :: INNOVATIVE

- ▶ Grant writing
- ▶ Natural resource stakeholder surveys
- ▶ ESA/MMPA/NEPA/MSA policy and analysis
- ▶ Biosampling
- ▶ Electronic monitoring and machine learning
- ▶ Graphic design and communications
- ▶ Facilitation and meeting coordination
- ▶ Assisting capacity-challenged organizations
- ▶ Resource management and monitoring planning

www.lynker.com
spautzke@lynker.com



7:00 to 9:00 am

Breakfast (Kuilima 3)

Sponsored by Port of Nanaimo with support from GHD and FCS Group

9:00 am to Noon

Field Trip! Tour of Dole Plantation

We're very excited to advise that we'll be visiting the Dole Plantation (a half hour drive from the Turtle Bay Resort) for a tour of the pineapple field and the packaging plant. Representatives from Dole will be on hand to provide commentary on operations, including cargo logistics and supply chain aspects.

Versatility

noun

ver-sa-til-i-ty | \ ,vər-sə-'ti-lə-tē \

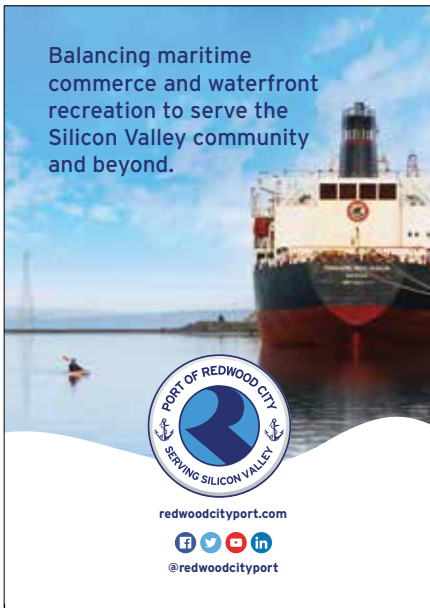
ability to adapt or be adapted to many different functions or activities.

Anchorage, Alaska has a small port with great versatility to serve statewide marine transport needs: containers, break bulk, dry bulk, liquid bulk, dry barge, military . . . and cruise ships too.



PortOfAlaska.com

Balancing maritime commerce and waterfront recreation to serve the Silicon Valley community and beyond.



redwoodcityport.com



@redwoodcityport

Noon to 12:45 pm

Lunch (Kuilima 3)

Sponsored by Port of Alaska, Fiji Ports Corporation, Liftech, and BBK Law

12:45 to 1:15 pm

Board of Directors Meeting

Association of Pacific Ports business. All Port Members are considered a part of the Board of Directors however all are welcome.

1:15 to 1:55 pm

From Stem to Stern: Proper Roles on Board your Agency's Ship

Ruben Duran, Managing Partner, BBK Best Best & Krieger LLP, and Mary Anne Rooney, Commissioner, Oxnard Harbor District/The Port of Hueneme

This interactive session will cover essential tools to ensure every member of your crew, from board members to lawyers and staff, knows and understands what it takes for smooth sailing towards your own successful horizon.

1:55 to 2:25 pm

SEEiNg the unSEEN

Hamish Clark, Global Head of Sales, SEEN Safety Inc.

Ports and materials handling machines are synonymous, and the level of interaction between machines and people in these demanding operating environments means the collision risk is always high. The losses associated with getting it wrong can be disastrous, even extending to human lives. Mitigating these risks requires the proactive implementation of active controls. This presentation looks at the nature of machine-people interaction in busy port operations and how collision avoidance systems like SEEN's IRIS system can help. Key themes include minimizing operational impact and effective targeting in the Critical Risk Zone. While the primary focus will be on SEEN's technology, comparisons will be made with common alternatives, highlighting the strengths and weaknesses of each.

2:25 to 2:45 pm

Refreshment Break (Kuilima 1)

Sponsored by EA Engineering, Science, and Technology, Inc. PBC

2:45 to 3:15 pm

A Remote Real-Time Intelligence Platform to Enhance Port Operations (Kuilima 1)

James Spencer, CEO, Shift Environmental Technologies

Due to the difficult operating space, the ocean industry lags behind other industries in incorporating emerging sensor and data acquisition technologies. The Remote Ocean Data, Surveillance, and Analysis (RODSA) project enables the adoption of unmanned systems and smart analytics bringing together ocean technology innovators to integrate existing and emerging systems onto a common platform. This research and development project focuses on the operational needs of port and terminal operators, using multi-mission hardware and software to automate and enhance logistics, maritime domain awareness, environmental monitoring, and spill preparedness and response operations. The research project and pilot aims to identify key features that can support decision-making by port operators and strategists to augment and integrate with existing Vessel Traffic Information Systems (VITS) and Port Management Information Systems (PMIS).

3:15 to 3:30 pm — Wrap-up Session

A chance for last comments, last thoughts, and a look to our upcoming 110th Annual Conference in Kaohsiung, Taiwan — August 11 to 14, 2024.

Serving Pacific communities since 1882



SPEAKER PROFILES

Joe Carrillo

Regional Vice President, Northern California, SSA Pacific



Joe Carrillo serves as Northern California's regional vice president for SSA Pacific Inc. SSA Pacific Inc. is a subsidiary of global terminal operator SSA Marine based in Seattle, Washington. SSA Marine is the world's largest privately held stevedore company and operates in over 250 strategic locations. Joe is in his 17th year with SSA Marine and has gained a wealth of knowledge regarding global supply chain processes. Joe's stops along his career have included major global seaports such as Long Beach, Mexico and Panama while always servicing multi-nation companies with dynamic teams inside the organization.

Derek Chow

Business Development Manager, Burns & McDonnell



Derek Chow currently serves as the Pacific Rim Business Development Manager for Burns & McDonnell Engineering Company. Previously, he served as the director of Hawaii's commercial ports and oversaw the U.S. Army Corps of Engineers water resources development throughout the Pacific. He was deployed in support of Operation Enduring Freedom and Operation Iraqi Freedom to assist with infrastructure reconstruction in these war-torn countries. He is a graduate of the U.S. Coast Guard's Leadership Program and the U.S. Army Corps of Engineers Leadership Program.

Greg Chu

General Manager, Container Operations, Matson



Greg Chu was promoted to the position of General Manager, Container Operations – Hawaii in January 2023. In this role, Greg is responsible for the management and coordination of all Matson Navigation Company operations in the Hawaii region. Since joining the company in 1996, Greg has risen to a number of leadership positions, including Manager, Vessel Operations and then Manager, Pacific Northwest Operations in Seattle. In 2017, Greg moved to Auckland, New Zealand as General Manager, South Pacific. He was responsible for all of Matson's business interests and strategic development in the South Pacific, which include ocean shipping services, bulk fuel/gas, and LCL consolidation. Greg is a former Lieutenant Commander in the U.S. Naval Reserves. He earned a B.S. in marine transportation from the U.S. Merchant Marine Academy, Kings Point and an M.B.A. in business administration from Loyola Marymount University.

Hamish Clark

Global Head of Sales, SEEN Safety Inc.



Hamish Clark is SEEN Safety's Global Head of Sales and President of their American entity, SEEN Safety Inc. He has been with the company from the time its IRIS product was launched. During that time he has helped the company grow from an inaugural sale in New Zealand just 4 years ago to thousands of systems in over 20 countries around the world. Numbers of these are in ports. Hamish is a seasoned and multi-skilled business development professional with many years of international experience in B2B markets offering a variety of technology-based products & services. He describes himself as a strong advocate for entrepreneurial endeavour, pin-sharp marketing and consultative selling that addresses customer pain. His favourite mantras are "Safety is no accident" and "an A team with a B idea is always preferable to the other way round."

Randa Coniglio

Acting President and CEO,
Port of San Diego



Randa Coniglio was appointed President and Chief Executive Officer on June 11, 2015 and served in that capacity until she retired in February 2020. At the Board's request, she returned in July 2023 to serve as Acting President and CEO. She formerly served as Executive Vice President, Operations, providing corporate oversight over the Real Estate, Environmental & Land Use Management, Government & Civic Relations, Maritime and Marketing & Communications departments. She has been with the Port since April 2000, starting out in the Port's Real Estate Operations Department. Prior to the Port, she spent eight years handling a local portfolio of commercial investment properties for a Japanese firm, and five years in retail leasing and development. Coniglio holds a bachelor's degree in chemistry from the University of California, San Diego.

John Daley

Engineering Manager, Port of Alaska
Modernization Program, Port of Alaska



John Daley, P.E., S.E., is currently acting as the Engineering Manager for the Port of Alaska Modernization Program (PAMP). He began that position in the fall of 2022. Prior to that, he worked as a civil, structural and waterfront engineer and consultant for over 25 years. Mr. Daley managed and or participated in a wide variety of civil and waterfront engineering projects including roadways, water and wastewater pipelines, bridge dock and harbor inspections, flood control projects, erosion control projects, as well as the planning and design of docks, harbors, and breakwaters. He is an experienced corrosion engineer and has designed cathodic protection systems for underground and submerged structures.

Ruben Duran

Ontario Office Managing Partner, Best Best & Krieger LLP



Ruben Duran represents exclusively public agencies in the Municipal Law and Government Policy & Public Integrity practice groups of Best Best & Krieger LLP. As general counsel to the Oxnard Harbor District, which owns and operates the commercial Port of Hueneme, the Crescent City Harbor District and the cities of Ontario and Fontana, California, he brings a comprehensive, interdisciplinary approach to the practice of public law. With an emphasis on open government and transparency and complex conflicts of interest issues, as well as elections law, land use and planning issues, Ruben also provides special counsel to many of the firm's clients. Ruben is currently serving his second term as chair of the State Bar of California Board of Trustees, and was recently awarded IMLA's Brown, Mulligan, Rocha Distinguished Public Service Award.

Alan K. Goldstein

Law Office of Alan K. Goldstein



Alan K. Goldstein specializes in admiralty and maritime law including the laws governing ports and port authorities. Recognized in America's Best Lawyers, as a Super Lawyer and as AV Preeminent by Martindale Hubbel, the highest possible rating. Alan is based in the San Francisco Bay area and practices across a broad geographic region including the pacific rim. The Bush and Obama administrations appointed Alan as the only lawyer on the Lower Mississippi River Water Safety Advisory Committee that advises the Coast Guard on navigation safety in and about the Port of New Orleans. Alan graduated from Stanford Law School, earning order of the Coif, and Northwestern University, as Phi Beta Kappa and first in his class. Alan clerked for the honorable Thelton Henderson on the U.S. District Court, N.D. California. Alan regards the practice of law as a profession and emphasizes how advance legal planning can reduce risk and add value to businesses.

Mark Your Calendar! APP 110th Annual Conference! August 11 to 14, 2024 — Kaohsiung, Taiwan
www.PacificPortsConference.com

Bulk & Breakbulk / Fuel & Liquid / Grain
General Manager Kim B. Puzey — 541-379-9700

SHIPPING SOLUTIONS AT TWO DEEP SEA TERMINALS LINKING VANCOUVER ISLAND'S ECONOMY TO THE WORLD.

- The Port of Nanaimo ships 18 different Vancouver Island products to 25 ports in 14 countries.
- Short-sea shipping to Vancouver with capacity to handle containers, bulk, break bulk, heavy lift and project cargoes.
- Enhanced infrastructure providing versatility and efficiencies for diverse cargo and vessel solutions and to meet a growing container business both locally and globally.

PORT OF NANAIMO
 LOCAL BENEFITS — GLOBAL REACH

For Cargo and Terminal opportunities, please contact:
Jason Michell, VP - B.D.
 (250) 734-3457
JMichell@npa.ca

www.npa.ca

100 PORT DRIVE, NANAIMO, BC

SPEAKER PROFILES

Randy Grune

Managing Director, Hawaii Stevedores, Inc., a Pasha Group Company



Mr. Randy Grune is the Managing Director of Hawaii Stevedores, Inc. (HSI), a full service provider of stevedoring and marine terminal services in Hawaii, with operations in all the major commercial ports in Hawaii. HSI was founded in 1984 by his father, the late Murray Grune, when he led a leveraged buy-out of Castle & Cooke Terminals, Ltd. Today HSI employs nearly 400 team members as an independent subsidiary of The Pasha Group, which also operates facilities at the ports of San Diego, San Francisco and Los Angeles, CA; Baltimore, MD; Grays Harbor and Longview, WA. At HSI, Mr. Grune held the roles of Property & Project Manager; Vice President, Administration; Chief Operating Officer; and from 1997-2007 President and CEO; prior to the sale of HSI to Horizon Lines, Inc. in 2007. Following a brief period of maritime consultancy, he then segued into the public sector when Governor Neil Abercrombie appointed him to a four-year term as the Hawaii Department of Transportation's Deputy Director, Harbors Division. Mr. Grune returned to HSI's executive leadership in 2015 as Regional Manager following The Pasha Group's acquisition of Horizon Lines' Hawaii business.

DreanaLee Kalili

Deputy Director, Hawaii Department of Transportation



Dre Kalili serves as a Deputy Director for the Hawaii Department of Transportation (HDOT) and oversees operations of the state's commercial ports system. She was appointed by Governor Josh Green in December 2022. The priorities for the ports include preparing for sea level rise and improving port resilience and completing key capital improvement projects and land acquisitions to increase capacity and alleviate congestion. Prior to her appointment as Deputy Director, Dre served as the HDOT Highways Special Projects Manager and led the \$25 million broadband pilot project to fiber-enable highway facilities and provide free high-speed internet service in underserved communities statewide. She also provided support for implementation of the Infrastructure Investment and Jobs Act programs including the National Electric Vehicle Infrastructure (NEVI) program, and prepared discretionary grant applications for various highway programs. Dre also served as an Interim Deputy Director and Executive Assistant for the City and County of Honolulu's Department of Transportation Services, Business Development Manager for HDOT, Policy and Program Analyst for the Department of Hawaiian Home Lands, and as a Projects Director for Government Affairs and Business Development for the Native Affairs and Development Group in Washington, D.C. She holds a Master of Business Administration and a Bachelor's degree in international affairs and Russian language.

Dan Malcolm

Board of Port Commissioners,
Port of San Diego



Dan Malcolm was sworn into the Board of Port Commissioners on January 5, 2011, after appointment by the Imperial Beach City Council. President and CEO of Malcolm Properties, he has extensive experience in the field of commercial real estate brokerage, investment, finance, and commercial property development. Commissioner Malcolm has previously served on numerous public and private boards including the Imperial Beach City Council, San Diego Metropolitan Transit Development Board, South County Economic Development Council, SANDAG and as Chairman of Sweetwater High School District Bond Oversight Committee. He has also served as Chairman of Sharp Coronado Hospital and as a director on the master board of Sharp Healthcare. Commissioner Malcolm holds an undergraduate degree in real estate finance from San Diego State University and a law degree from Thomas Jefferson School of Law.

Captain Jamie Marshall

National Sector Lead, Ports & Marine,
Colliers Project Leaders



Captain Jamie Marshall is the National Sector Lead for Ports & Marine, at Colliers Project Leaders. He has more than 40 years' experience in the marine sector, including nearly a decade in the Canadian navy, and as a captain and executive leader at BC Ferries. He has served on several boards of directors, including the Canadian Ferry Association, Pacific Pilotage Authority and the Association of BC Marine Industries.



Celebrating 35 years of helping ports of the Pacific
achieve financial and economic success.

Utility Rate and Fee Consulting | Utility Management | General Government Financial Analysis | Economic and Funding Strategies Analysis

www.fcsgroup.com | 503.841.6543

In-depth speaker profiles
are available at
PacificPortsConference.com

Chris Martin

Vice President, Operations,
Young Brothers LLC



Chris Martin is the Vice President of Operations for Young Brothers, LLC, Hawaii's leading interisland freight handling and transportation company. Serving individuals and

businesses alike, Young Brothers is the only regularly scheduled water carrier authorized by the State of Hawaii's Public Utilities Commission to transport goods between the islands. From food and other refrigerated cargo to building materials, equipment, and cars, Chris' team of highly skilled employees at the terminal and on the ocean, navigate some of the most challenging channels in Hawaii to provide shipping solutions for every type of cargo. Chris has more than 20 years of maritime transportation experience that spans both here and in the Pacific Northwest. Using his experience to guide him, Chris understands the critical service Young Brothers provides to the state and continues to work to move the Company forward for another 120 years.

Michael Ohashi

General Manager, Sales
Pasha Hawaii, The Pasha Group



Michael Ohashi is a seasoned professional in the transportation industry, currently serving as the General Manager, Sales at Pasha Hawaii. Holding an under-

graduate degree in Travel Industry Management from the University of Hawaii, Michael has honed his expertise in understanding the dynamics of the travel sector. Complementing his undergraduate education, he pursued an MBA from Hawaii Pacific University, further solidifying his business acumen. He also serves as a board member for the Hawaii Food Industry Association. With a passion for sales and a passion for serving our customers, Michael brings a wealth of knowledge and experience to his role in leading the sales team at Pasha Hawaii.

Rory J. Respicio

General Manager, Port of Guam



Former Senator Rory J. Respicio has extensive experience in the legislative and executive branches of government. He served in the 27th through 33rd Guam Legislatures. He held various legislative leadership positions, including Majority Leader and Chairperson of the Committee on Rules, Federal, Foreign and Micronesian Affairs, Human and Natural Resources, Election Reform, and Capital District. Respicio is currently the General Manager of the Jose D. Leon Guerrero Commercial Port of Guam. He has held this position from January 8, 2019, to the present. He leads a team of dedicated

Port Strong employees that have realized record-breaking vessel discharge times from 36 hours to an average of 18 to 20 hours.



Liftech
LIFTECH CONSULTANTS INC.
www.Liftech.net

**Innovation
Experience
Integrity**

Creative Solutions for Port Modernization

Clients trust Liftech to deliver engineering tailored to their unique challenges, including helping design the world's largest low profile shuttle boom cranes, and designing the new wharf girders and power system upgrades that support them.



Proud to Sponsor

Helping ports thrive
in commerce and
as stewards of the
environment and the
communities they
serve.



bbklaw.com

Resilient solutions
for ports and
maritime facilities.

BURNS & MCDONNELL

burnsmcd.com



SPEAKER PROFILES

Mary Anne Rooney

Commissioner, Oxnard Harbor District/The Port of Hueneme



Mary Anne Rooney was elected to the Board of Harbor Commissioners for the Port of Hueneme in 2010, the first woman in the 86-year history of the Port. Her service and leadership roles in the global arena include: Past President of the Association of Pacific Ports (APP); Former Executive Director of the World Affairs Council, California Central Coast Chapter; Delegate on a Leadership Mission to Taiwan in 2013, and Past President of the Oxnard/Ocotlán Sister City Committee. Ms. Rooney is a member of the Ventura County LAFCo Board and Member of the Ventura County Special Districts Association. In addition to her other roles, Ms. Rooney is an independent strategic business consultant, working with local non-profits and private clients. She is the co-founder of Nyeland Promise, a non-profit designed to transform Nyeland Acres and fill it with hope and pride. Ms. Rooney earned her bachelor's degree from U.C. Santa Barbara and a master's degree from Azusa Pacific University. She holds a Certificate in Mediation and Negotiation and is a Certified Global Business Professional.

James Spencer

CEO, Shift Environmental Technologies



James Spencer is the founder and CEO of Shift Environmental Technologies, a company that has been at the forefront of developing autonomous marine technology and coastal intelligence solutions. Since its inception in 2020, Shift has raised over \$25M in funding, largely through strategic partnerships with First Nations and cutting-edge technology providers. James has over 20 years of experience in the coastal resource sector, with a diverse background in marine eco-physiology, spill science, and project management. He has worked on projects ranging from the Aleutian Islands to the Oregon Coast. Under James's leadership, Shift has become a pioneering force in the industry, focusing on uncrewed coastal technology platforms like the OceanSled™ and comprehensive domain awareness systems. These innovations are at the heart of Shift's mission to enhance maritime operations, offering real-time data intelligence and advanced sensor integration for a wide range of applications including marine incident management, environmental monitoring, and coastal security.

Sam Whitin

Vice President and Coastal Resilience Director, EA Engineering, Science, and Technology Inc., PBC



Sam Whitin is a Vice President and the Coastal Resilience Director at EA Engineering, Science, and Technology Inc., PBC. He has over 25 years of experience related to the restoration and protection of coastal infrastructure and is a Certified Ecological Restoration Practitioner (CERP) with the Society for Ecological Restoration. Mr. Whitin leads specialized teams of engineers and scientists throughout the continental U.S. as well as Alaska and Hawaii to design and implement on-the-ground projects using nature-based solutions to improve resiliency to climate change for ports as well as governmental agencies such as Department of Defense, National Marine Fisheries Service, National Park Service, Army Corps of Engineers, as well as a variety of other state, private, and non-profit partners.

Erik Soderberg, PE, D.PE, SE

President, Liftech Consultants Inc.



Erik Soderberg is Liftech's president and a structural engineer with over 29 years of experience in the design, review, and modification of a variety of structural systems including dozens of wharves, the design of over four miles of wharves and crane girder systems, hundreds of container cranes, and over a dozen bulk loader structures. Other structures include crane lift and transfer systems and concrete and steel floats.

Jeff Wingfield

Deputy Port Director of Regulatory and Public Affairs, Port of Stockton



Jeff Wingfield began his career at the Port of Stockton in 2004. He now serves as the Deputy Port Director of Regulatory and Public Affairs. He oversees the environmental, public affairs, government affairs, and grants departments. Jeff is responsible for balancing commerce and growth with environmental sustainability. His division assesses the environmental impacts of development projects and determines appropriate mitigation measures as well as prepares and distributes environmental documentation; dredging permitting and coordination; noise abatement, water quality, and air quality; contamination characterizations; wildlife management; and establishment of policies regarding environmental quality issues. Jeff oversees public affairs for the port and is responsible for the overall communications activities, including media relations, community outreach, and special events. Jeff also identifies funding opportunities for electrification, port development, and infrastructure improvement in the grants department. He collaborates with multiple governmental agencies to secure funding for these initiatives.

In-depth speaker profiles are available at
www.pacificportsconference.com

Delivering On Dependability



YOUNG
BROTHERS

Safe, reliable, and frequent
interisland shipping services.

www.YoungBrothersHawaii.com



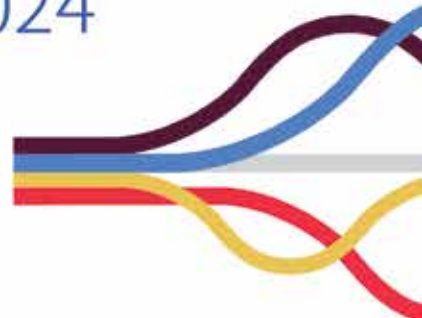
APP 110th Annual Conference

Port of Kaohsiung

August 2024



Port of Kaohsiung



www.PacificPortsConference.com